

# 4219 PANDORA STREET

BURNABY, BC



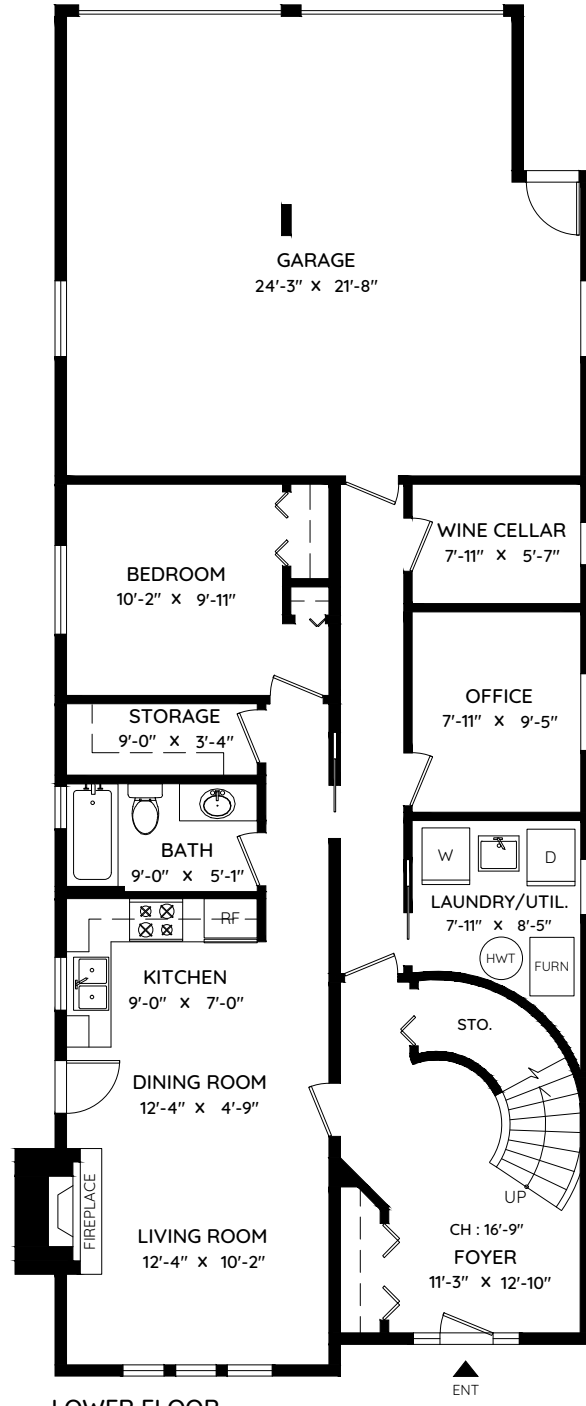
**DARYL HOFFMAN**  
PERSONAL REAL ESTATE CORPORATION

778.833.4633 daryl@daryloffman.ca  
RE/MAX Crest Realty daryloffman.ca

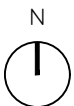
MAIN	1,453 SQ.FT.	GARAGE	544 SQ.FT.
LOWER	1,068 SQ.FT.	DECK	305 SQ.FT.
<b>TOTAL</b>	<b>2,521 SQ.FT.</b>	BALCONY	47 SQ.FT.
		<b>TOTAL</b>	<b>896 SQ.FT.</b>



**MAIN FLOOR**  
1,453 SQ.FT.  
CH: 8'-0"



**LOWER FLOOR**  
1,068 SQ.FT.  
CH: 8'-0"



0 ft 3 ft 5 ft 10 ft

The floor plan and the measurements are approximate within +/- 2% and are to be used for advertising usage only. May include unfinished area. Not suitable for architectural or construction. E&O Insured