

613 - 1500 OSTLER COURT

NORTH VANCOUVER, BC

MAIN	890 SQ.FT.	BALCONY	93 SQ.FT.
UPPER	848 SQ.FT.	PATIO	225 SQ.FT.
LOWER	754 SQ.FT.	TOTAL	318 SQ.FT.
TOTAL	2,492 SQ.FT.		

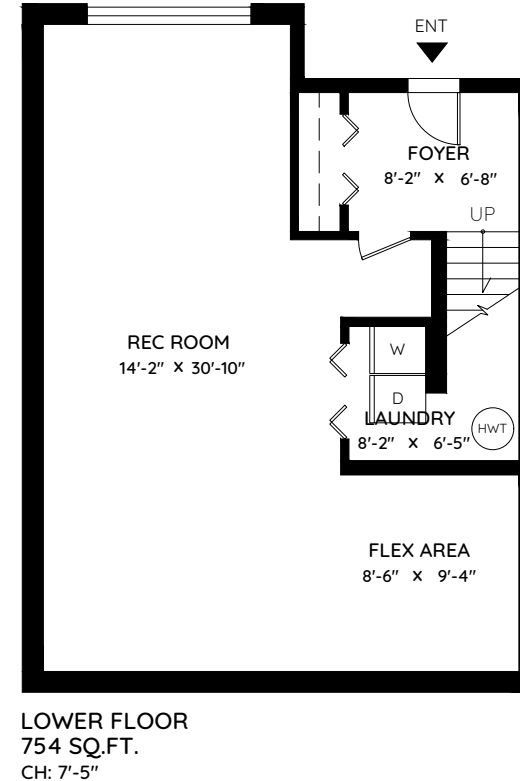
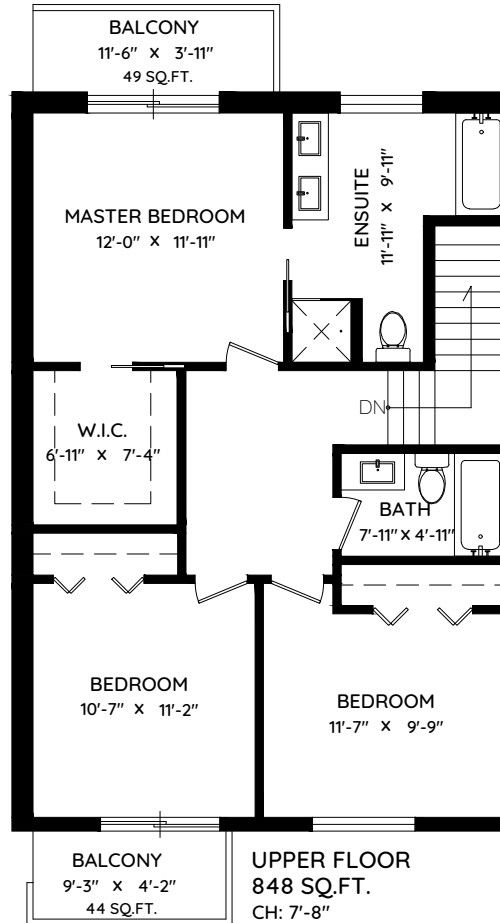
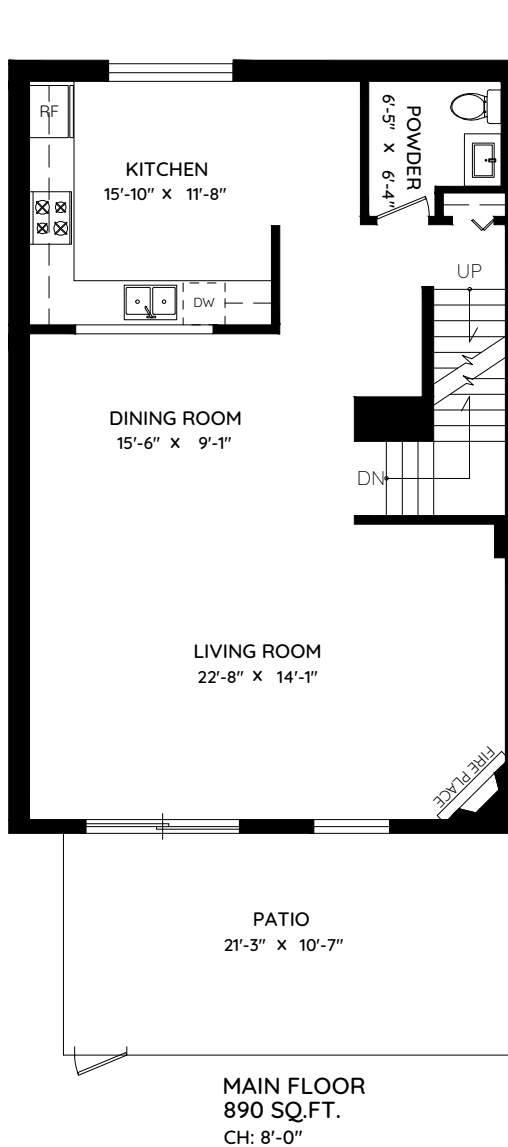


DARYL HOFFMAN

PERSONAL REAL ESTATE CORPORATION

778.833.4633 daryl@darylhoffman.ca

RE/MAX Crest Realty darylhoffman.ca



0 ft 3 ft 5 ft



The floor plan and the measurements are approximate and are to be used for advertising usage only. Not suitable for architectural or construction. E&O Insured