

111 2620 FROMME ROAD

NORTH VANCOUVER, BC

TOTAL AREA 1,007 SQ.FT.

PATIO 205 SQ.FT.

CEILING HEIGHTS 8'-0"

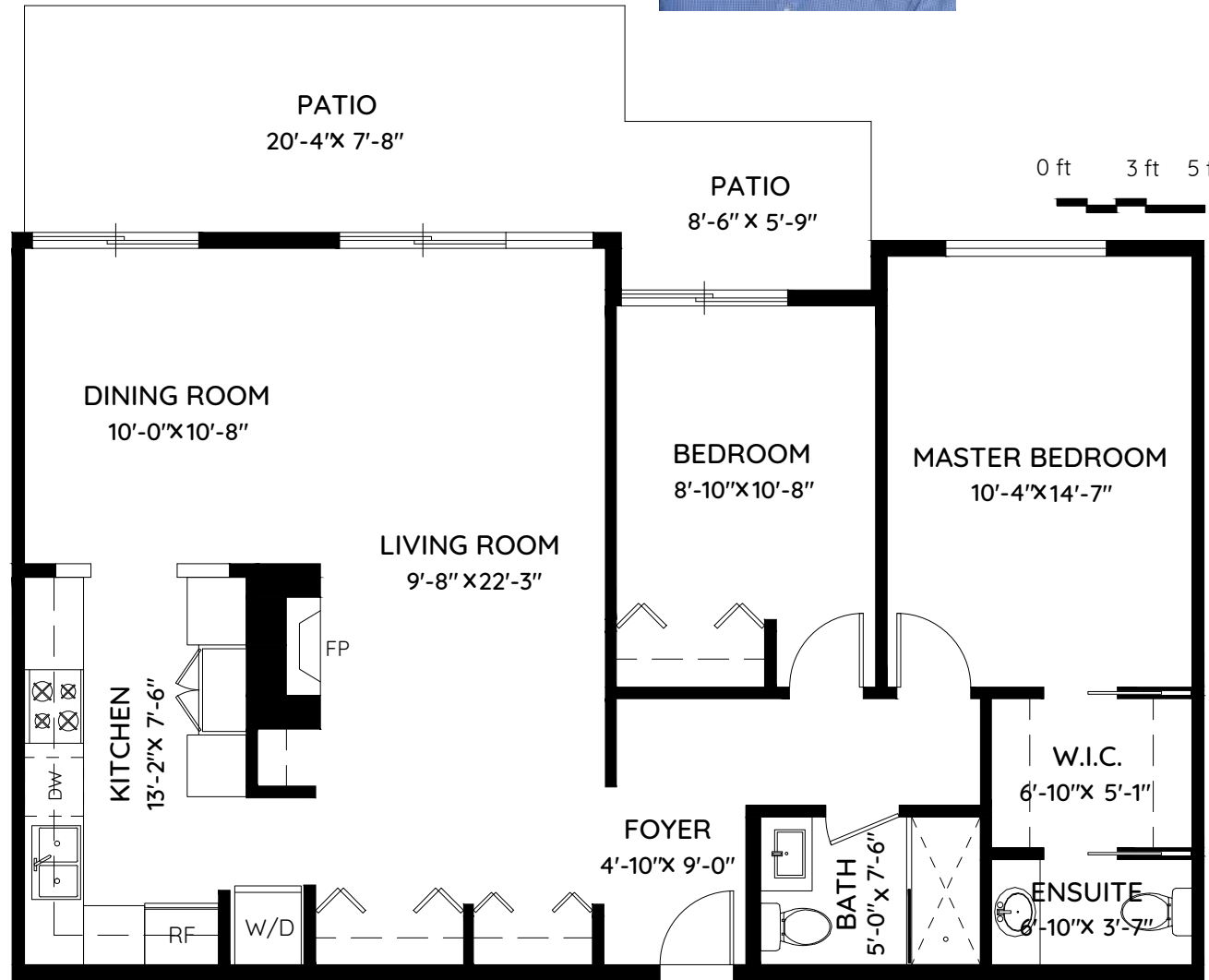


DARYL HOFFMAN

PERSONAL REAL ESTATE CORPORATION

778.833.4633 daryl@darylhoffman.ca

RE/MAX Crest Realty darylhoffman.ca



MAIN FLOOR
1,007 SQ.FT.
CH: 8'-0"



The floor plan and the measurements are approximate and are to be used for advertising usage only. Not suitable for architectural or construction. E&OE. © 2019 KEYPLAN Measuring Inc.



Booked on
the Pixilink App™

